

# WHO WEBINAR

*March | 19 | 2020*

COVID-19 pandemy :

Experiences from the International Centre for Rural Health

Prof. Claudio Colosio & ICRH TEAM



UNIVERSITÀ  
DEGLI STUDI  
DI MILANO

Sistema Socio Sanitario

Regione  
Lombardia

ASST Santi Paolo e Carlo



WHO Collaborating  
Centre  
for Occupational Health

# Contents

- Background information
- Situation in Italy, Lombardy, Milan
- Hospitals: San Paolo and San Carlo
- Surveillance protocol, procedures
- Index cases presentation
- Data collection and preliminary results
- Conclusions



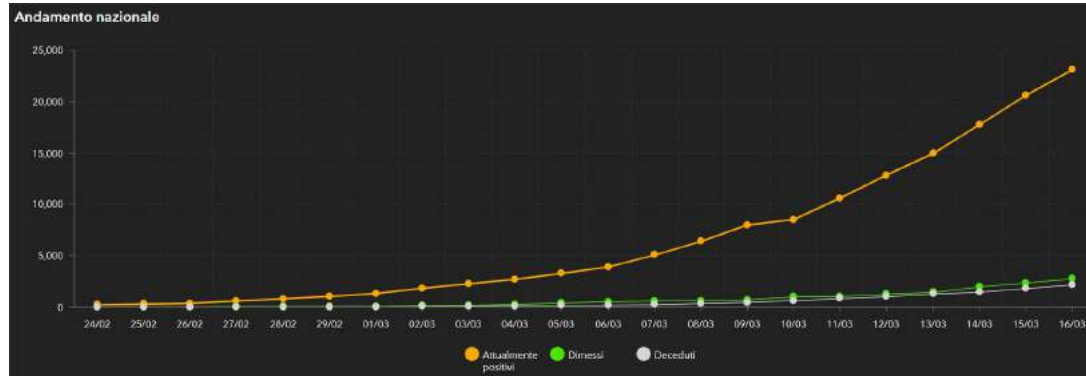
# International Centre for Rural Health

- **International Centre for Rural Health (ICRH): created in 2007 at the San Paolo Hospital of Milan (scientific coordinator Prof. Claudio Colosio)**
- **Aim of the Centre: creating innovative experiences of health care delivery in rural areas and promoting activities addressed at rural health at the local, national and international level.**
- **It was designated as a WHO Collaborating Centre for Occupational Health in 2010**
- **Terms of reference: *ToR 1*) Development of diagnostic and exposure criteria for occupational diseases; *ToR 2*) Coordination of the work of the WHO collaborating centres for developing methods for early detection of priority occupational diseases; *ToR 3*) Advocate and raise awareness on provision of occupational health services in rural areas; *ToR 4*) Collection of good practices on improving occupational health and safety in hospitals**

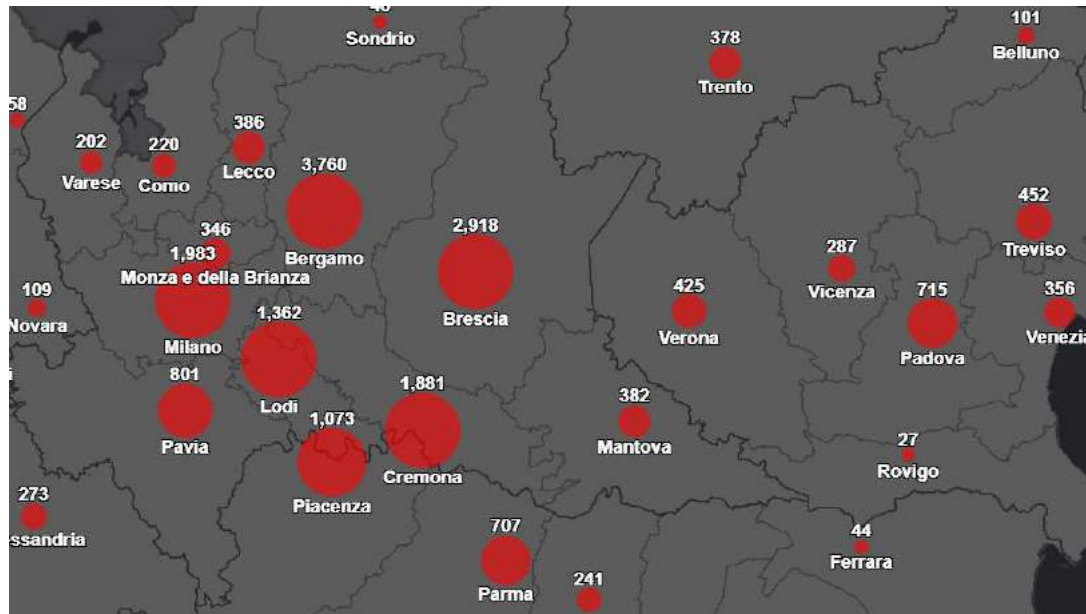
# International Centre for Rural Health

- Part of the public health system of the Region of Lombardy (annexed at the Occupational Health Unit of the University Hospital San Paolo of Milan)
- Acts in agreement with the University of Milan, Department of Health Sciences
- Serves specific projects of the Region of Lombardy (health surveillance of agricultural workers, risk assessment and prevention of pesticide use in agriculture)

# Situation report: Italy, Lombardy, Milan



LOMBARDIA	
Bergamo	3760
Brescia	2918
Como	220
Cremona	1881
Lecco	386
Lodi	1362
Monza Brianza	346
Milano	1983
Mantova	382
Pavia	801
Sondrio	46
Varese	202
in fase di verifica e aggiornamento	
<b>Totale</b>	<b>14649</b>



Regione	AGGIORNAMENTO 16/03/2020 ORE 17.00							
	POSITIVI AL nCoV				DIMESSI/ GUARITI	DECEDUTI	CASI TOTALI	TAMPONI
	Ricoverati con sintomi	Terapia intensiva	Isolamento domiciliare	Totale attualmente positivi				
Lombardia	6171	823	3867	10861	2368	1420	14.649	43.565
Emilia Romagna	1362	197	1529	3088	88	146	3.322	13.096
Veneto	498	156	1620	2274	130	69	2.473	35.052
Marche	528	110	547	1185		57	1.242	3.225
Piemonte	1045	186	174	1405		111	1.516	5.588
Toscana	175	107	559	841	11	14	866	5.910
Liguria	255	73	247	575	42	50	667	2.189
Lazio	267	31	174	472	32	13	523	9.330
Campania	103	22	238	363	28	9	400	2.517
Friuli V.G.	96	19	231	346	18	22	386	4.851
Trento	73	19	275	367	5	6	378	1.006
Bolzano	53	11	171	235		6	241	1.740
Puglia	116	6	90	212	2	16	230	2.017
Sicilia	75	20	108	203	8	3	213	2.653
Umbria	30	15	114	159	4	1	164	1.093
Abruzzo	71	37	57	165	7	4	176	1.533
Calabria	36	7	44	87	1	1	89	1.030
Sardegna	39		66	105		2	107	797
Valle d'Aosta	28	5	70	103		4	105	287
Molise	3	5	7	15	5	3	21	253
Basilicata	1	2	9	12			12	230
TOTALE	11.025	1.851	10.197	23.073	2.749	2.158	27.980	137.962

# San Paolo and San Carlo Hospitals

- A total of 4142 workers employed in two public hospitals in south ovest Milan, operated by the National Health Service. They're also both university hospitals
- 70 % woman
- Mean age ca. 46 years
- What we have done:
  - Reduction or discontinuation of some medical practices
  - Restricting access and visiting hours
  - Preventive strategies according to WHO shared procedures

nuovo coronavirus

*Dieci comportamenti da seguire*

- 1 Lavati spesso le mani
- 2 Evita il contatto ravvicinato con persone che soffrono di infezioni respiratorie acute
- 3 Non toccarti occhi, naso e bocca con le mani
- 4 Copri bocca e naso se stamutisci o tossisci
- 5 Non prendere farmaci antivirali né antibiotici, a meno che siano prescritti dal medico
- 6 Pulisci le superfici con disinfettanti a base di cloro o alcol
- 7 Usa la mascherina solo se sospetti di essere malato o assisti persone malate
- 8 I prodotti MADE IN CHINA e i pacchi ricevuti dalla Cina non sono pericolosi
- 9 Contatta il numero verde 1500 se hai febbre o tosse e sei tornato dalla Cina da meno di 14 giorni
- 10 Gli animali da compagnia non diffondono il nuovo coronavirus

Tratt. Nazionale dalla Task Force Comunicazione ISS su base di: OMS, ECDC e ISS  
© Istituto Superiore di Sanità - Marzo 2020

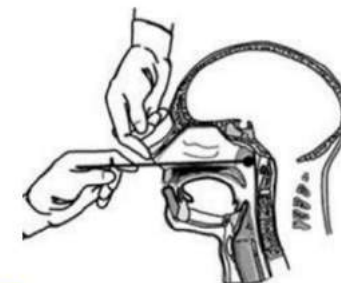
# Surveillance protocol for healthcare professionals

- “Close contact”= healthcare professional who assisted a patient confirmed for COVID-19 without PPD or household contact with a person confirmed for COVID-19
- Workers who have recently traveled from or live in an area with ongoing spread of COVID-19, are considered at higher risk
- Protocol: Nasopharyngeal swab for real-time RT PCR (rRT-PCR) detection of 2019-Novel Coronavirus (2019-nCoV)

ANAMNESIS	MEASURES BEFORE SWAB APPLICATION OR RESULTS
<b>ASYMPTOMATIC WORKER</b>	Fitness for work



<b>NEGATIVE SWAB</b>	HEALTH SURVEILLANCE FOR 14 DAYS ADMINISTRATION OF PHONE INTERVIEW OR SELF ADMINISTERED QUESTIONNAIRE → Daily monitoring of workers' health – data collection sheet
----------------------	---



# Surveillance protocol for healthcare professionals

ANAMNESIS	MEASURES	RESPONSIBLE OF THE APPLICATION
<b>ASYMPTOMATIC WORKER</b>	nasopharyngeal SWAB	Hospital management supported by our Unit
	if the swab is positive: not fitness for work	
	if the swab is negative: fitness for work	
<b>ASYMPTOMATIC WORKER WITH HISTORY OF POSSIBLE CONTACT WITH POSITIVE CASE</b>	nasopharyngeal SWAB	Hospital management supported by our Unit
	if the swab is positive: not fitness for work	
	if the swab is negative: fitness for work with use of PPE (surgery mask) and monitoring of clinical symptoms	
<b>ASYMPTOMATIC WORKER AND NO HISTORY OF POSSIBLE CONTACT WITH POSITIVE CASES</b>	Fitness for work	Hospital management supported by our Unit



## Surveillance protocol for healthcare professionals

If COVID 19 infection is confirmed:

- Quarantine lock down after communication to health authority
- Legal requirement of occupational accident linked to health care work
- Return to work only after 2 negative nasopharyngeal swab in 24 hours



# Index case: San Carlo Hospital

**Index case**

53 SWABS

1 POSITIVE MD → 134 SWABS

2 POSITIVE NURSES

0 POSITIVE ← 20 SWABS

29 SWABS → 2 POSITIVE MD

TOTAL WABS : 349

TOTAL POSITIVE CASES: **17** (14 FROM HEALTH SURVEILLANCE UNIT, 3 FROM EMERGENCY UNIT)

TOTAL ISOLATED (AWAITING CONF.): 12

TOTAL ACCIDENT AT WORK REPORTED: 12

TOTAL SICK WORKERS (NOT OCCUPATIONAL INFECTION) : 3

TOTAL CASES MANAGED AT EMERGENCY UNIT : 2

Case **IULIANO** (from emergency unit): absence from work cause of sickness  
(not accident at work)

40 swab → 5 positive cases (MDs and nurses)

**INVESTIGATION  
IN PROGRESS**

# Index case: San Paolo Hospital

We had different index cases from health care workers and patients

**TOTAL SWABS : 537**

**TOTAL POSITIVE CASES: 19** (14 FROM HEALTH SURVEILLANCE UNIT, 3 FROM EMERGENCY UNIT)

**TOTAL CASES MANAGED AT EMERGENCY UNIT : 2**

**SWABS PERFORMED BUT WAITING FOR RESULTS: 110**

# Data collection

Questions Responses 1,795

## Scheda dati salute

SCHEDA RACCOLTA QUOTIDIANA DATI SULLO STATO DI SALUTE PER POSSIBILI CONTATTI COVID-19 E SOGGETTI CON STORIA DI INFEZIONE  
 In caso di sintomi o TC superiore a 37.5 °C contattare appena possibile il numero 0281844363 (San Paolo) e/o 0240222440 (San Carlo).

### Ospedale \*

- San Paolo
- San Carlo

### Data del report \*

Month, day, year 

### Segni e/o sintomi \*

	Assente	Lieve	Moderato	Grave
Tosse	<input type="radio"/>	<input type="radio"/>	<input type="radio"/>	<input type="radio"/>
Dispnea	<input type="radio"/>	<input type="radio"/>	<input type="radio"/>	<input type="radio"/>
Malessere generale	<input type="radio"/>	<input type="radio"/>	<input type="radio"/>	<input type="radio"/>
Dolori muscolari	<input type="radio"/>	<input type="radio"/>	<input type="radio"/>	<input type="radio"/>
Cefalea	<input type="radio"/>	<input type="radio"/>	<input type="radio"/>	<input type="radio"/>
Mal di gola	<input type="radio"/>	<input type="radio"/>	<input type="radio"/>	<input type="radio"/>

### Altre annotazioni stato di salute

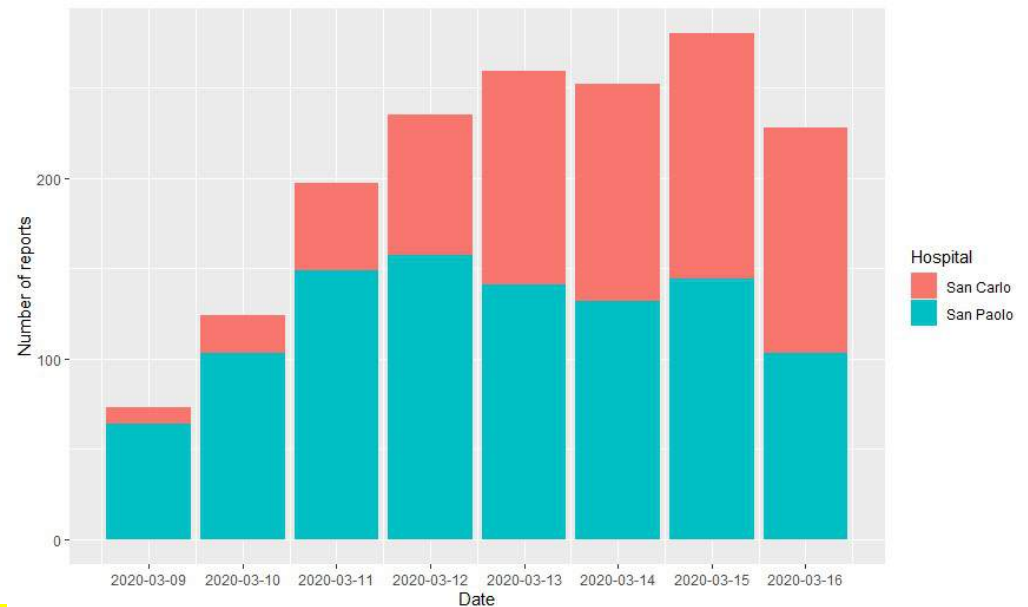
Long answer text

### Temperatura h 8 \*

Short answer text

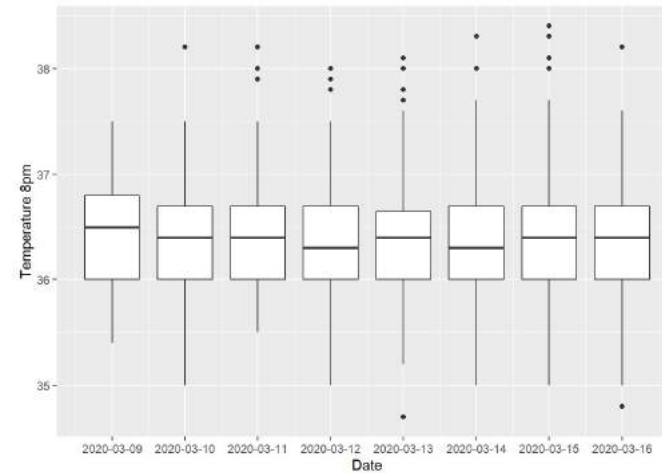
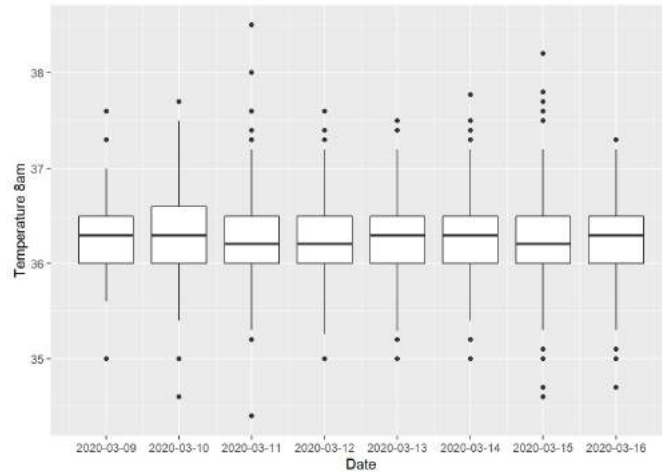
### Temperatura h 20 \*

Short answer text

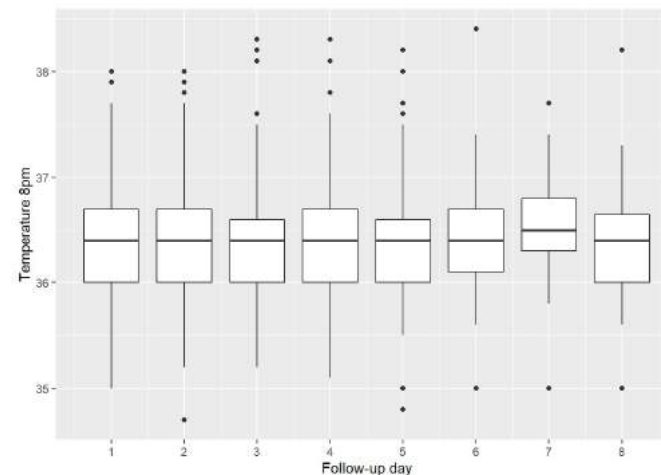
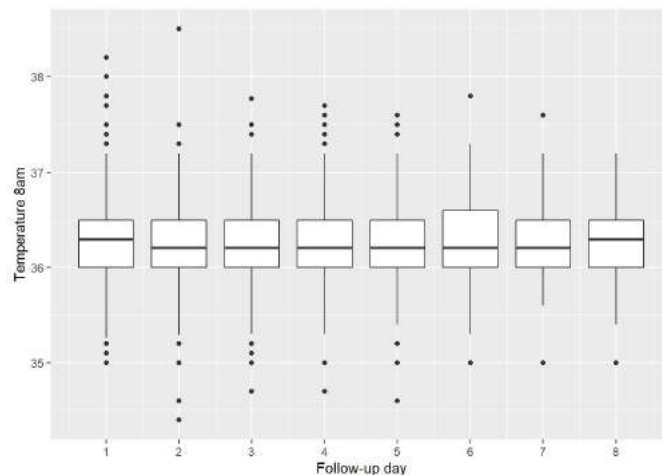


# Preliminary results: temperature (all)

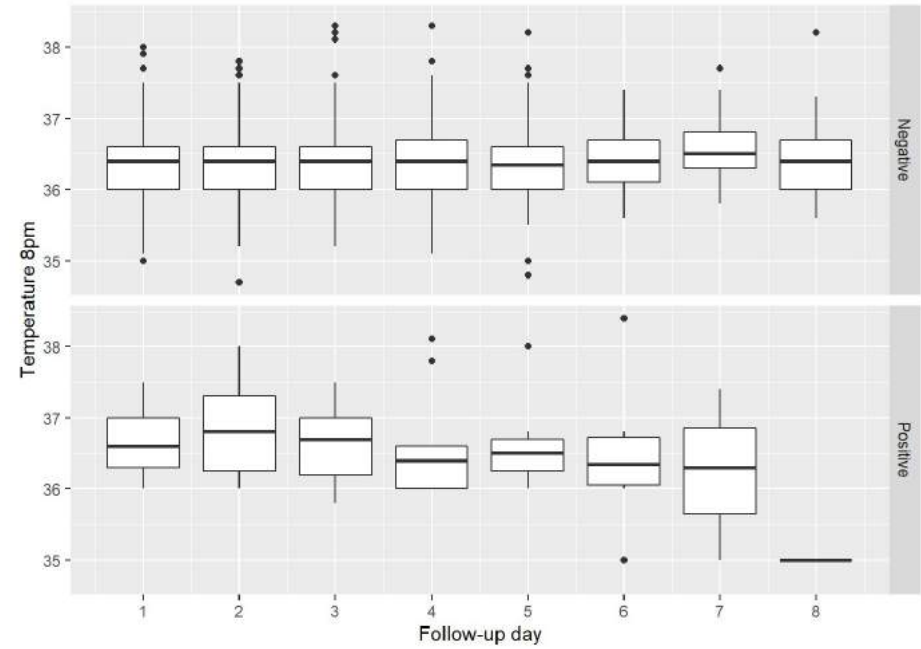
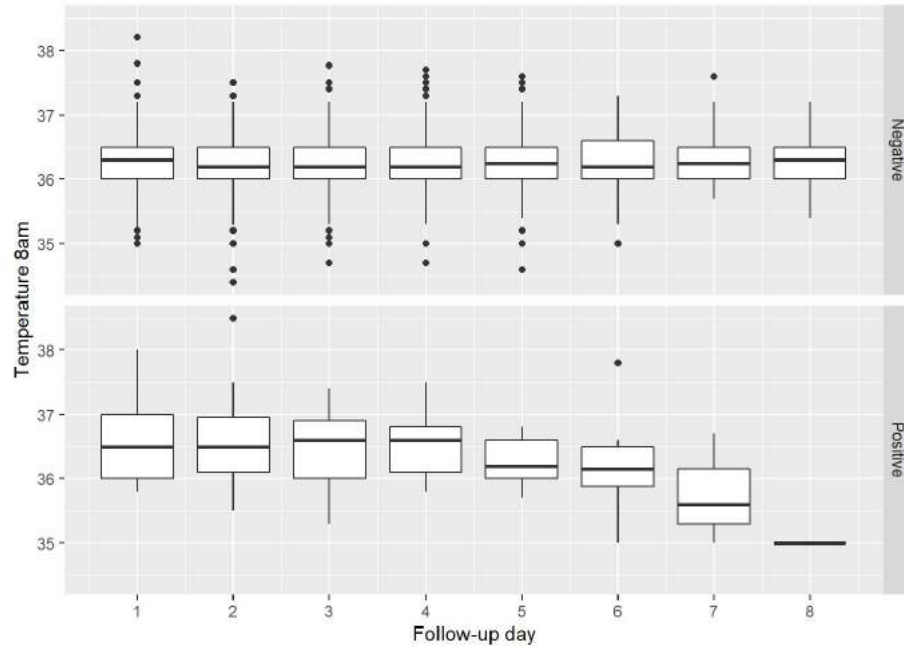
Morning and evening temperature: all workers under surveillance by date



Morning and evening temperature: by follow-up day



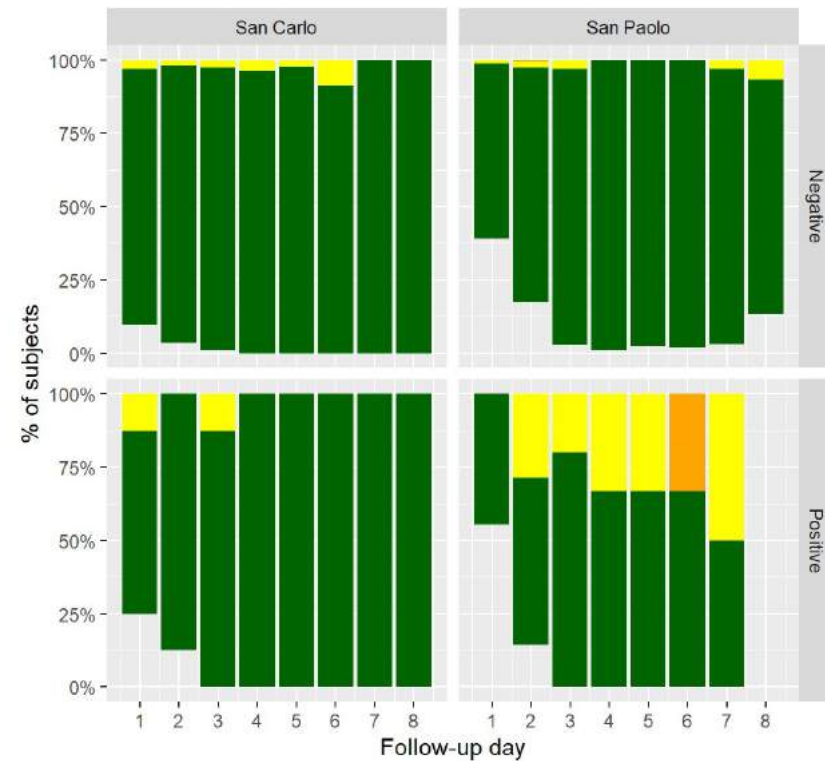
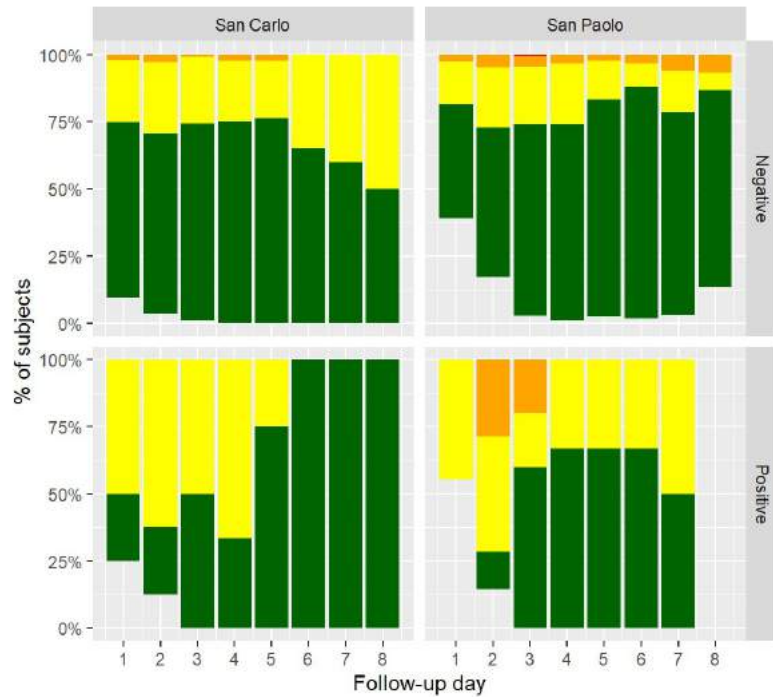
# Preliminary result: temperature by covid status



Covid positive workers



# Preliminary results: symptoms by covid status



Caugh

Dispnea

No symptoms

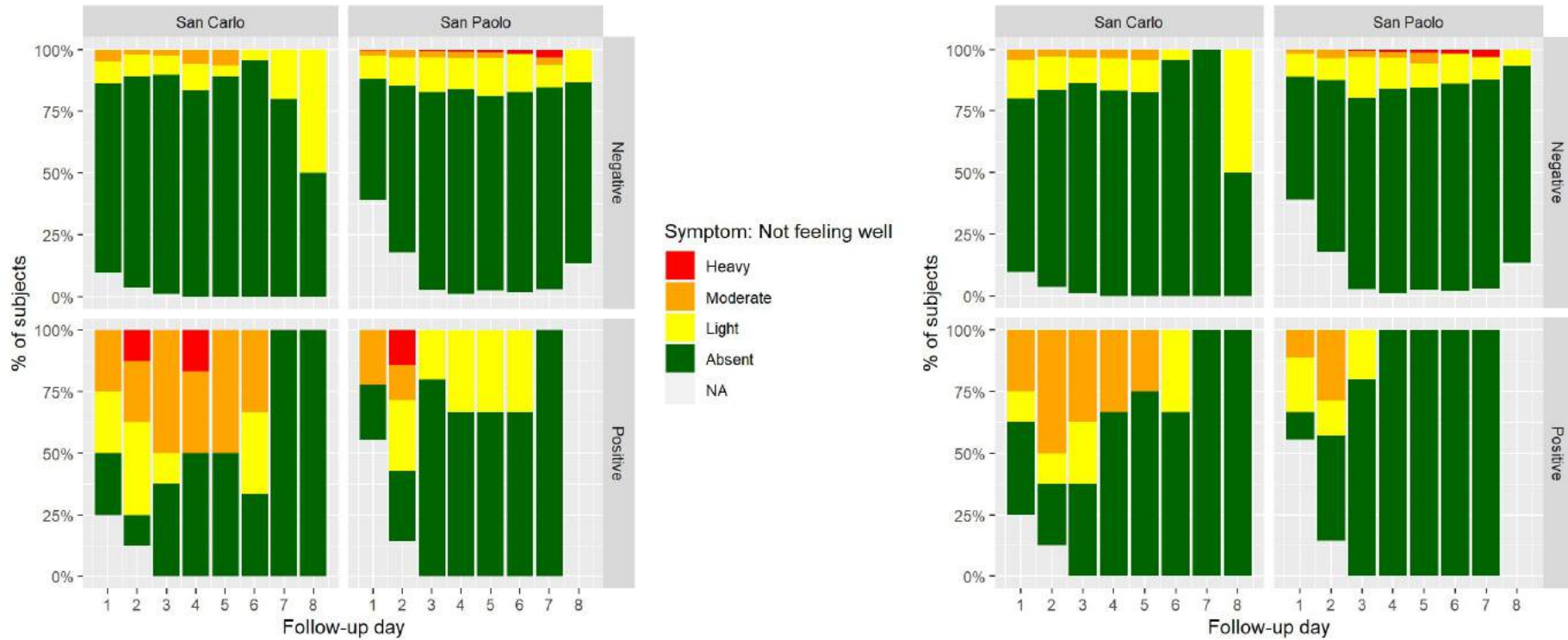
Light symptoms

Moderate symptoms

Heavy symptoms



# Preliminary results: symptoms by covid status



Not feeling well

Muscle pain

No symptoms

Light symptoms

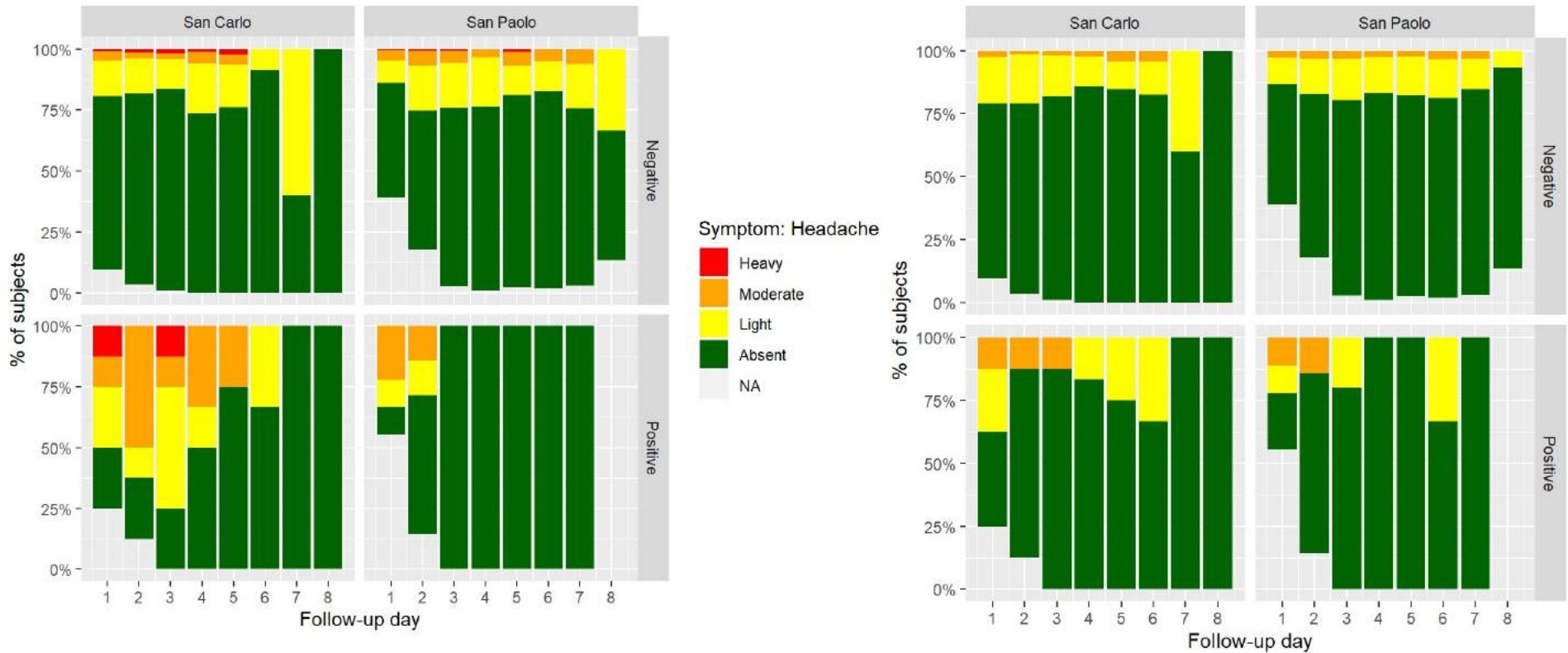
Moderate symptoms

Heavy symptoms





# Preliminary results: symptoms by covid status



Headache

Sore throat

No symptoms

Light symptoms

Moderate symptoms

Heavy symptoms



# Considerations

- 90% positive cases are asymptomatic
- General symptoms: Dry cough, dyspnea, sore throat, fever, diarrhea:  
**BUT also: anosmia, dysgeusia, conjunctival hyperemia**
- Our workers positive to COVID 19 did not need intensive therapy  
→ working age patients have not fatal outcome
- To avoid virus spreading is important to identify immediately the contacts and adopt preventive measures within 5 days:
  - no meetings
  - surgical mask
- FFP 2 e FFP3 → only for operator protection during maneuvers that create aerosols (e.g. bronchoscopy)
- Surgical mask: stops inlet and outlet droplets

Thank you for your attention

[claudio.colosio@unimi.it](mailto:claudio.colosio@unimi.it)



UNIVERSITÀ  
DEGLI STUDI  
DI MILANO

Sistema Socio Sanitario



Regione  
Lombardia  
ASST San Paolo e Carlo



WHO Collaborating  
Centre  
for Occupational Health