



Are you an Occupational Health Representative / Line Manager / Human Resources or other professional with experience supporting people with health conditions at work?

We are looking for volunteers to participate in an interview to understand how UK charities can offer advice and information to employers to support their employees with health conditions at work. Your participation will be confidential and the names of places or people you might refer to will be anonymised when transcribed.

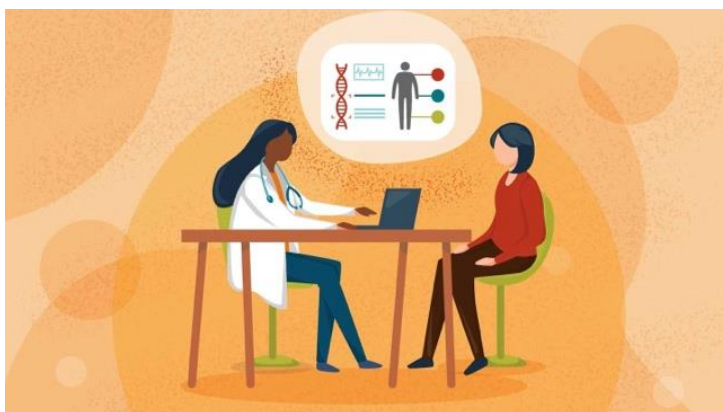
Understanding the needs of line managers is essential for supporting people with health conditions at work and creating a more diverse and productive workforce.

Please see the advert below for information or you can contact me at [blanca.dediosperez@nottingham.ac.uk](mailto:blanca.dediosperez@nottingham.ac.uk)



# How can we support employment for people with multiple sclerosis through MS charities?

We are interested in speaking with **Line managers, Human resources, occupational health** and other professionals with experience in managing or supporting people with health conditions to work.



## What is the study about?

We want to understand how national charities can support people with illness or disability to remain in paid employment.

You will be asked to participate in an interview via telephone or videoconference. The interview will last approximately 30 minutes.

## Can you help us?

If you would like further information, please contact Dr Blanca De Dios at [blanca.dediosperez@nottingham.ac.uk](mailto:blanca.dediosperez@nottingham.ac.uk)

This study has been funded by the UK MS Society  
Ethical approval has been obtained from the School of Medicine, University of Nottingham Ref FMHS 161-0324